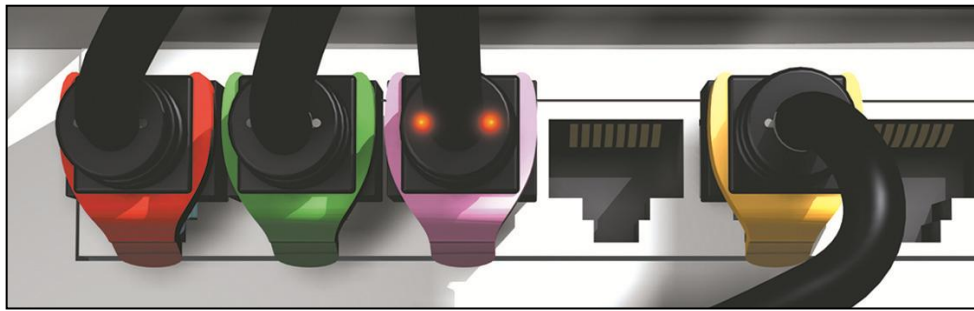


# **PhonePatch**

## **2 Pairs RJ 45 patch cords UTP**

### **Technical Data Sheet**

**Patent Pending**



## **2 Pairs RJ 45 Patch Cords UTP for TELEPHONY:**

**PatchSee** RJ 45 Patch Cords are designed, and individual tested for connecting the network equipment to patch panel and network user outlet. These Patch Cords are realized for connecting telephones applications with two twisted pairs connected: 36 and 45. You take 4 times less space in junction boxes, cable diameter halved.

### **PatchSee Concept and main characteristics**

- Light identification by plastic optical fiber,
- 3 lengths available : 7 feet (2,1m) / 10 feet (3,1m) / 16 feet (4,9m)
- 2 Pairs UTP cable
- Colour boot: Black
- Movable color clip, 16 colors available,
- Packaging: plastic bags of 12 cables
- Marking on the boot: length and P/N,
- Individual tested: each patch cord is individual tested
- Colour cable: Grey to distinguish it easily from PatchSee data line patch cords
- Slim line boot to align with the edges of the RJ45 plug for high density panels



## Technical Data Sheet

### Construction

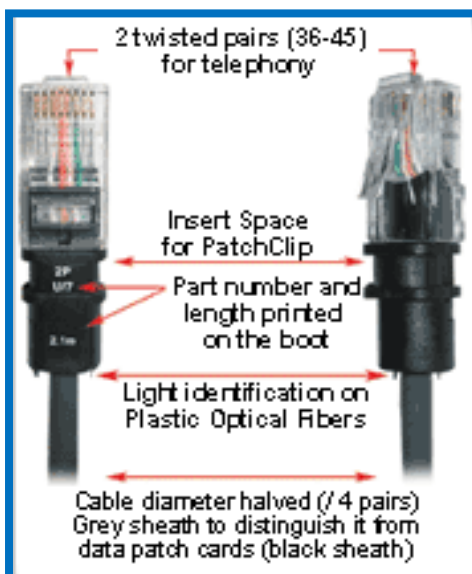
<b>Number of pairs</b>	2 connected : 36 and 45
<b>Conductor</b>	Stranded bare copper wire
<b>Gage</b>	24 AWG
<b>Insulation</b>	Foam Skin Polyethylene
<b>Pair screen</b>	n a
<b>Optical wave guide</b>	2 POF 0.5 mm
<b>Drain</b>	n a
<b>Jacket</b>	PVC Grey with white printing
<b>Overall diameter</b>	4,06 mm
<b>Plug housing</b>	UL 1863 Polycarbonate
<b>Contacts</b>	Moved contacts
<b>Contact Plating</b>	Gold 50 μ inches gold minimum (1.2 μm)
<b>Shielding</b>	n a

### Mechanical Properties of the cable

Fire Propagation Test	Temperature range During operation	Fire load	Bending radius
UL 444 VW 1 Flame test	-20°C up to +75°C	372 MJ/km	>25 mm without load

### Electrical Properties of the cable (at 20°C +/- 5°C)

DC loop resistance	Insulation resistance (500V)	Capacitance at 800 Hz	Impedance 1-100MHz	Impedance 100-250MHz	Propagation delay	Test voltage (DC, 1 min)
< 340Ω/km	> 2000 MΩ*km	Nom. 43nF/km	100 +/- 15 Ω	NA	< 427 ns/100m	1000 V



Length M	Length		P/N
	feet		
2,1	7		2P-U/7
3,1	10		2P-U/10
4,9	16		2P-U/16