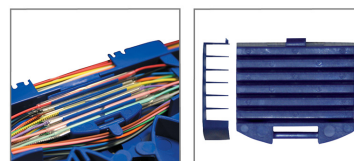
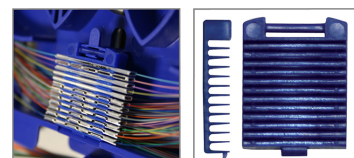
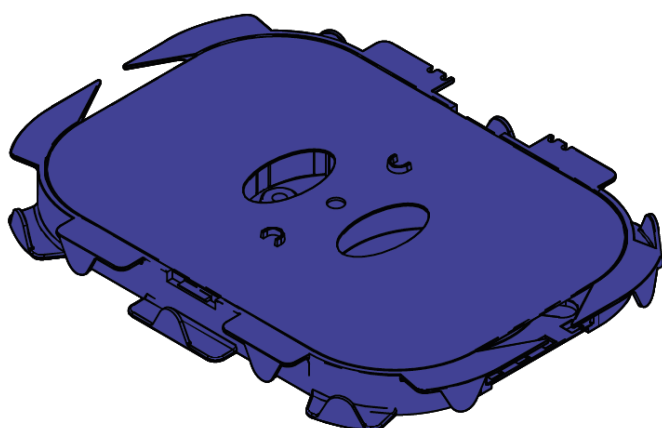


Product updated on November 17, 2017

Speedway Fibre Splice Tray



Item Description

Introducing the revolutionary new Speedway splice tray with unrivalled ease of use and flexibility. Featuring a unique external fibre pathway and pivoting splice holder arrangement this tray redefines the concept of splice management, combining fibre management and splicing control in one product. Due to its accommodating internal dimensions the Speedway splice tray is able to comfortably hold 24 splices with either heatshrink or crimp German style splice protectors with up to 900µm buffered fibres.

Features/Benefits

Applications

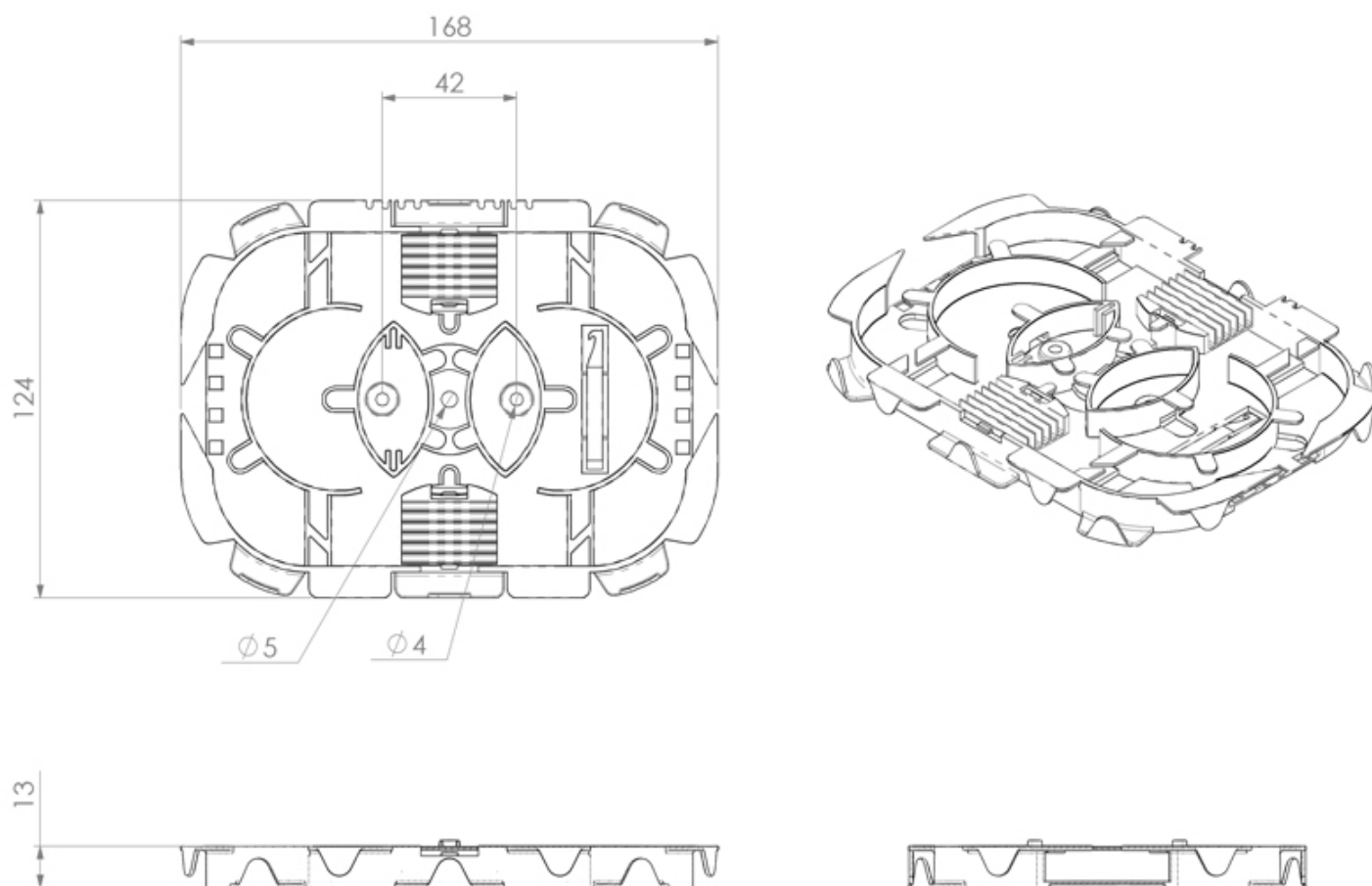
- Unique external fibre pathway allows easy storage of excess fibre and multi-directional routing of entry and exit fibres
- Spacious interior maintains 30mm fibre bend radius and allows storage of either 250µm or 900µm buffered fibre
- Internal management allows multiple fibre routing options including cross over
- Pivoting splice holders allow uninterrupted control of fibre prior to splicing and during rework
- Built in fibre pick can be used to withdraw individual fibres and can be stored in the tray after use
- Will hold up to 24 splices with either heatshrink or crimp style splice protectors
- Supplied with tray hinge to maintain access to splices with stacked trays
- Transparent clip in lid supplied with every tray
- Cable tie points to secure fibre on entry and exit
- Mountable via central hole, DIN style holes or double sided foam adhesive pad

- Fibre management
- Internal and external
- Wall boxes
- Patch panels

Specifications

ELEMENT	VALUE
Width	168mm
Depth	124mm
Height	13mm
Net weight	81g
Material	ABS
Colour	Blue
Operating temperature	-40°C to +60°C
Designed in accordance with	TIA/EIA 568.C, ISO/IEC 11801, EN50173, IEC60304, IEC61754,
Compliant to	RoHS, Reach/SVHC

Technical drawing



Ordering information

DESCRIPTION	PART NUMBER
Speedway Fibre Splice Tray Heat Shrink	SPT01
Speedway Fibre Splice Tray Crimp German Style	SPT02



Further Information

- For additional information please contact your sales representative
- To view the product 360 visit the product page (Scan the QR code or visit the link below)
- Downloaded from <https://www.fibrefab.com/product/speedway-fibre-splice-tray>
- FibreFab reserves the right to make changes in this datasheet at any time without notice
- Information in this document is correct as of November 17, 2017

SCAN QR FOR PRODUCT PAGE

Europe

+44 (0) 1908 441 144
sales@fibrefab.com
© FibreFab 2017

Americas

+1 800 790 9932
sales@fiberfabinc.com

Middle East & Africa

+971 4 404 9606
mesales@fibrefab.com

Asia Pacific

+86 755 2561 3694
asia@fibrefab.com